

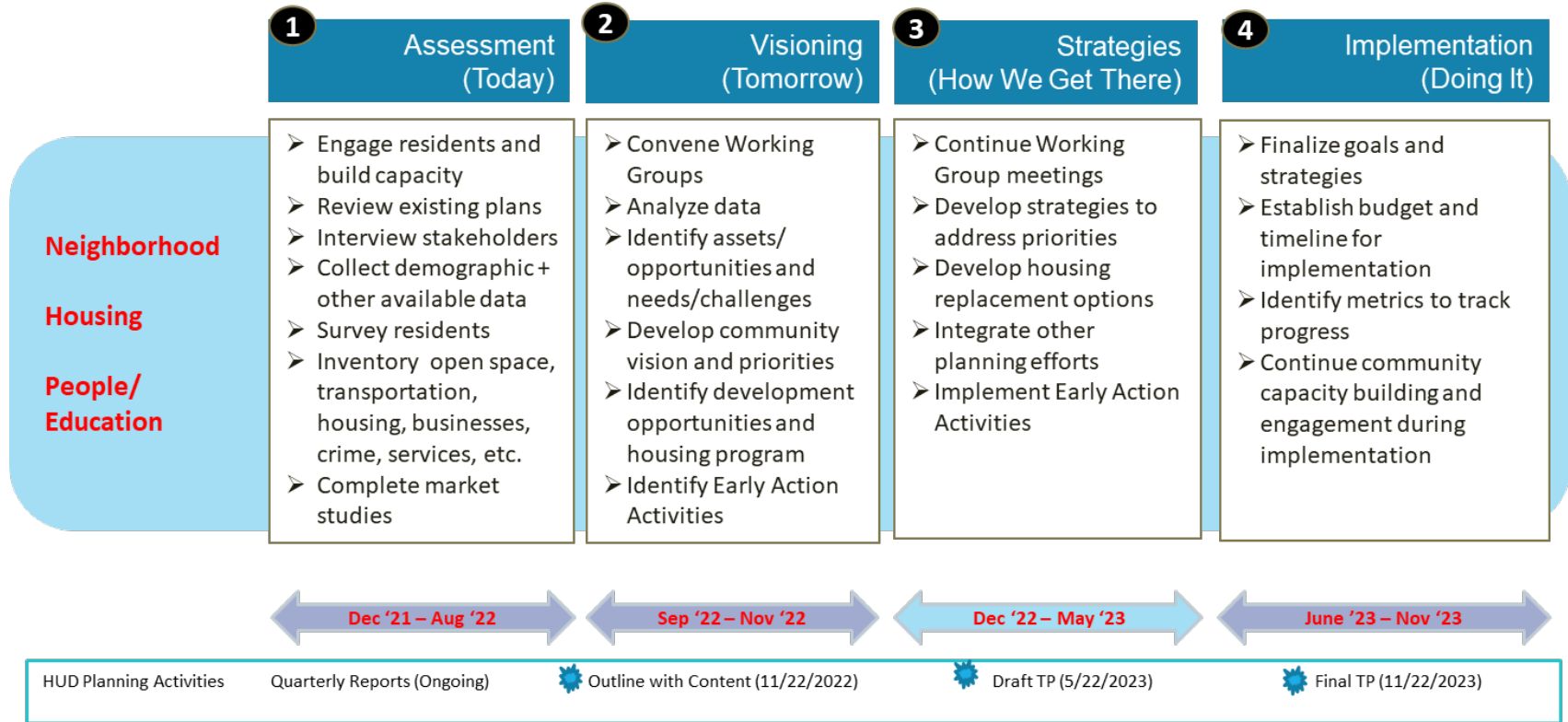


PEOPLE TASK FORCE
06/30/2022

AGENDA

1. **Introductions**
2. **Choice Neighborhood Initiative Process / Context**
3. **People Goals (Requirements)**
4. **Discussion / Hopes / Fears**
5. **Next Steps**

SCHEDULE



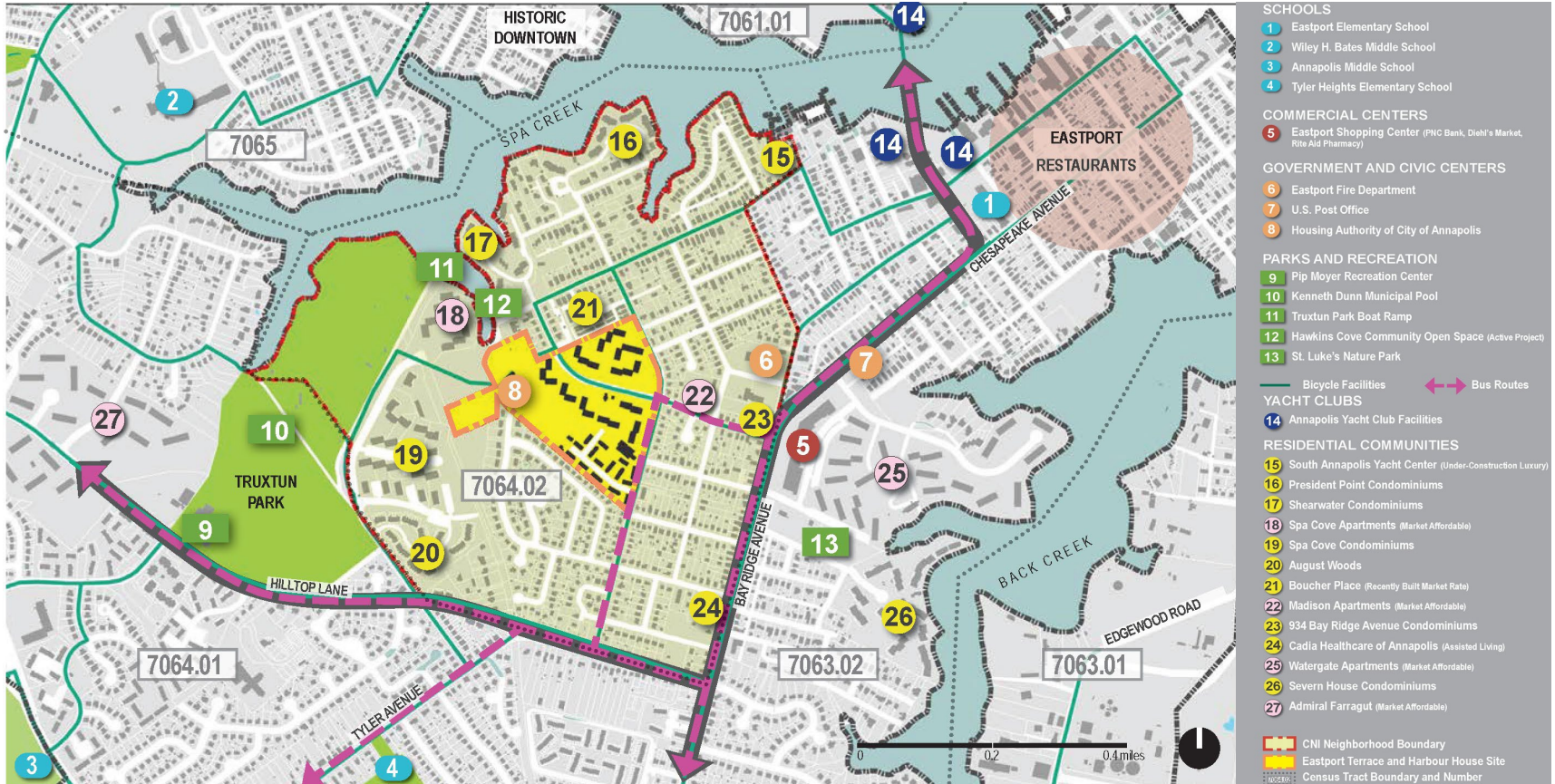
ROLE OF A TASK FORCE MEMBER?



- **Develop goals and outcomes**
- **Use your knowledge/expertise**
- **Identify resources, partners, funding and/or in-kind commitments**
- **Participate in community meetings, events, and charrettes**
- **Time commitment**

CONTEXT

LOCATION



RESIDENT DEMOGRAPHICS*

Eastport Terrace – Harbour House
(ET-HH)

* As of May 31, 2022

- 38% of households are families with children
 - 27% of heads of households are elderly
 - Average annual income: \$14,183
 - 32% of the households have income from wages and 4% have no income at all
 - 80% of households are 1- and 2-persons (average household size is 1.8)
 - 96% of residents classify themselves as Black/African-American, and 100% are non-Hispanic/Latino
 - 43% of families have lived at ET-HH for 10 years or more – 26% have lived here for over 20 years!
-

PEOPLE GOALS (Requirements)

Improve outcomes for ET-HH public housing residents

1. Income and employment
2. Health
3. Education: early childhood and school-aged children
4. More TBD...

BEST HOPES



**In a few words what
are your BEST HOPES
for this project?**

GREATEST FEARS

**In a few words what
are your GREATEST
FEARS for this
project?**

NEXT STEPS



- Complete Phase I Planning Assessment
- Phase 2 Visioning: September-November, 2022
 - Convene working groups
 - Analyze data
 - Identify assets/opportunities and needs/challenges
 - Develop community vision and priorities
 - Identify development opportunities and housing program
 - Identify Early Action Activities
- **Check Eastportni.org for upcoming meetings and events**