



**Choice** *Eastport*

PEOPLE | HOUSING | NEIGHBORHOODS

# People Task Force Meeting Education

March 1, 2023

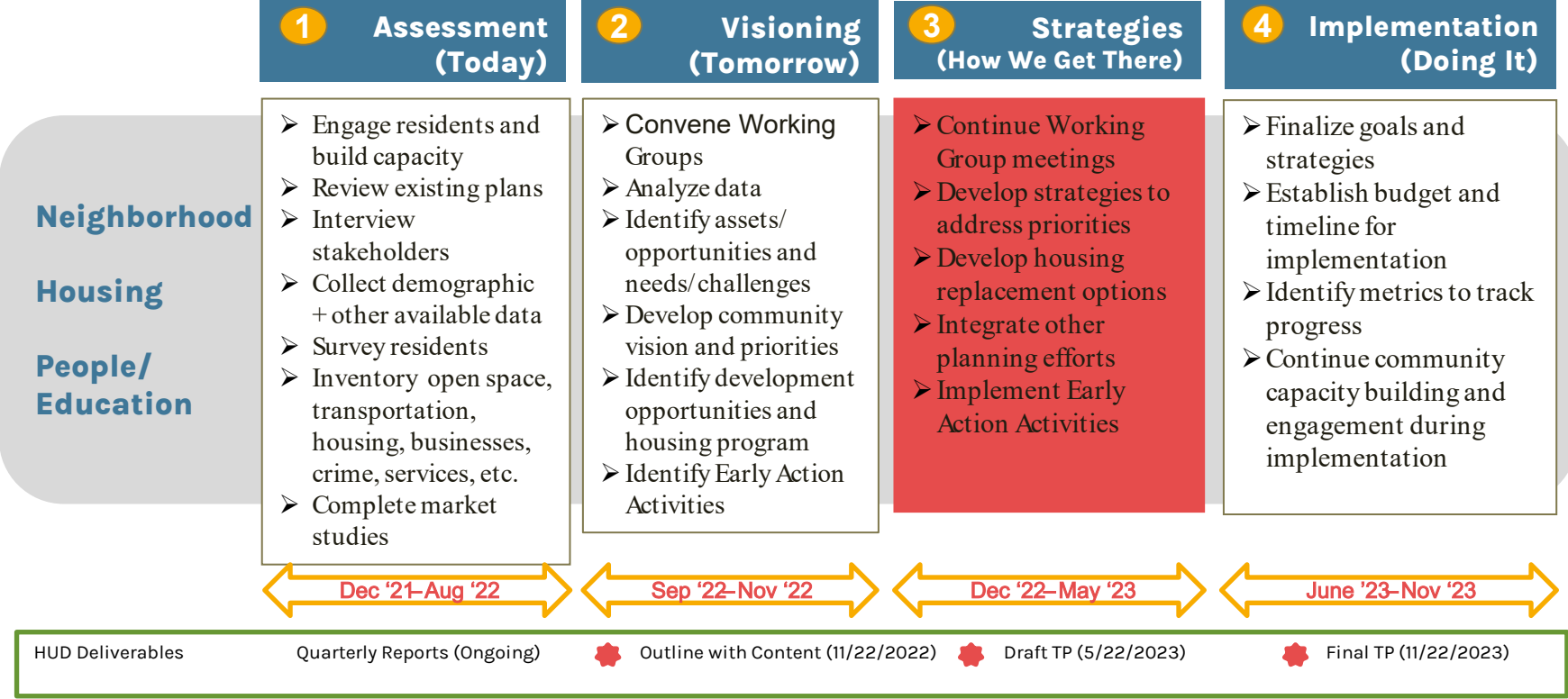




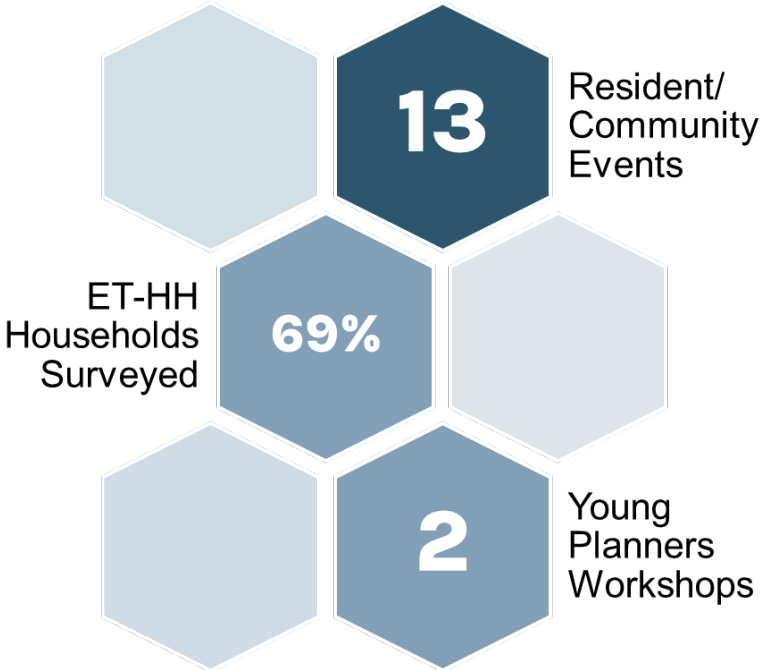
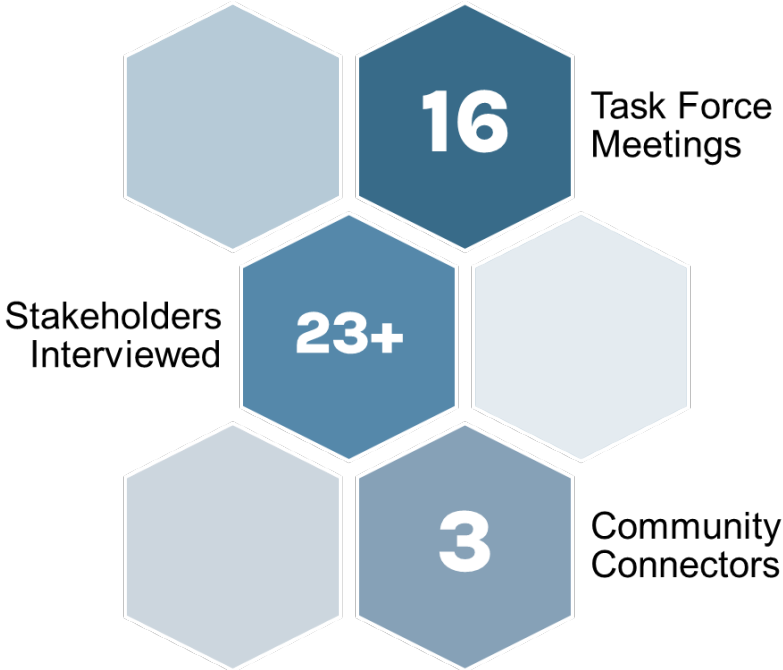
## Agenda

- I. **Welcome and Introductions**
- II. **Reminder – What has been done to date and what have we heard from Residents**
- III. **Part 3 of 3 Working Sessions**
  - I. **Education**
  - II. **Which partners are already providing services related to health and wellness?**
  - III. **What strategies should be considered – now and longer-term**

# What's Been Done; What's Next



# Community Engagement/Activation Activities



# Reminder – Upcoming Meetings

## Public Safety Roundtable


Monday, March 6, 2023 from 6:30 – 8:00pm (Virtual)


(Please visit [www.eastportcni.org](http://www.eastportcni.org) for meeting link)




# A Focus on Families

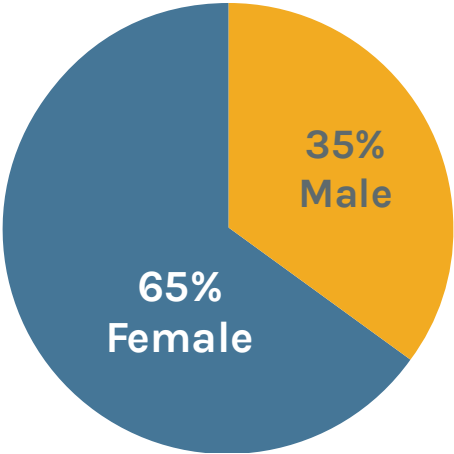
# Household Profile

 **294**  
**Households**  
(528 total residents)

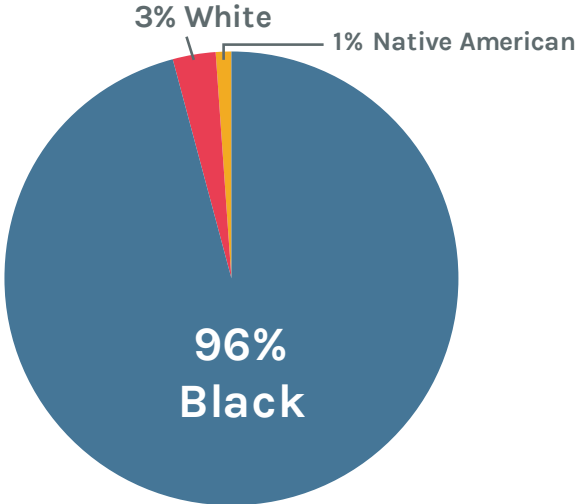
 **1.8**  
**Average**  
**Family Size**

 **1/3**  
**Have lived in the**  
**neighborhood for**  
**only 0-4 years**

### Gender Distribution



### Race

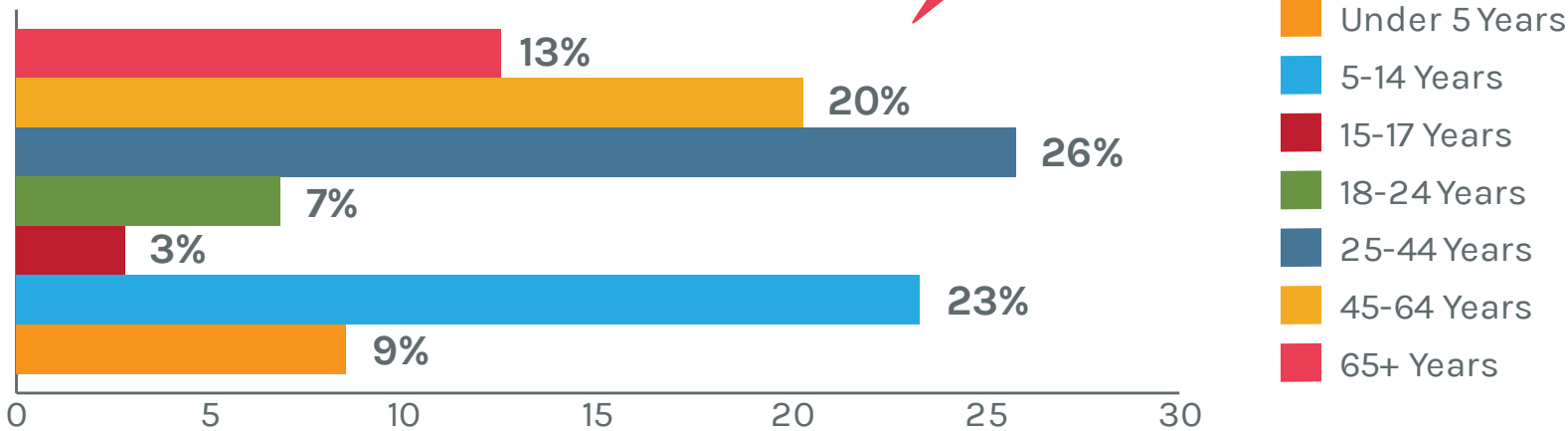


Data Source: HACA Yardi Demographic Data as of 6/1/2022



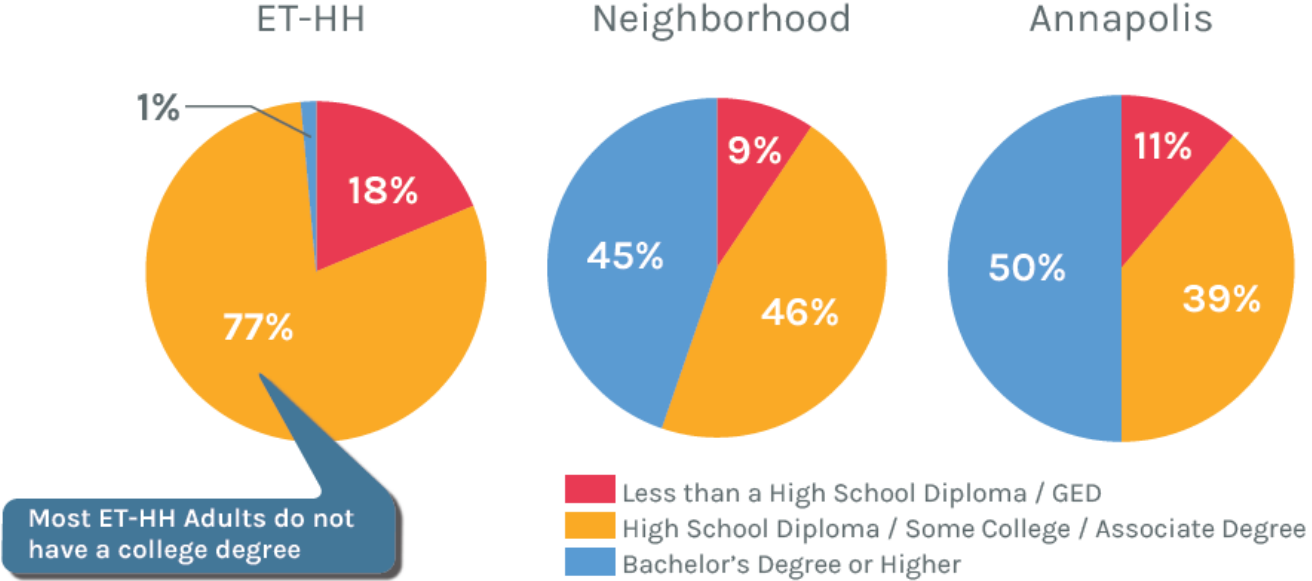
# Age Distribution

35% of population is under 18 years old



Data Source: HACA Yardi Demographic Data as of 6/1/2022

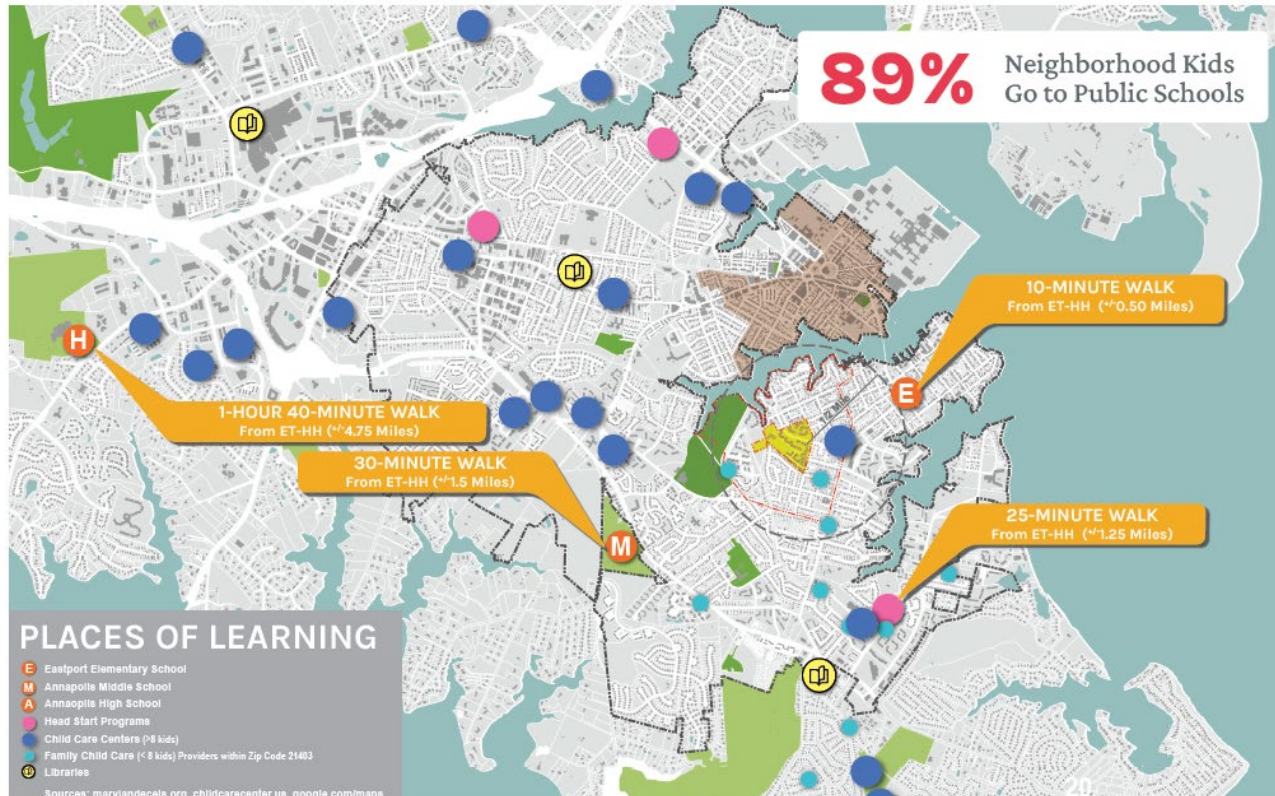
# High number of ET-HH residents have a High School diploma



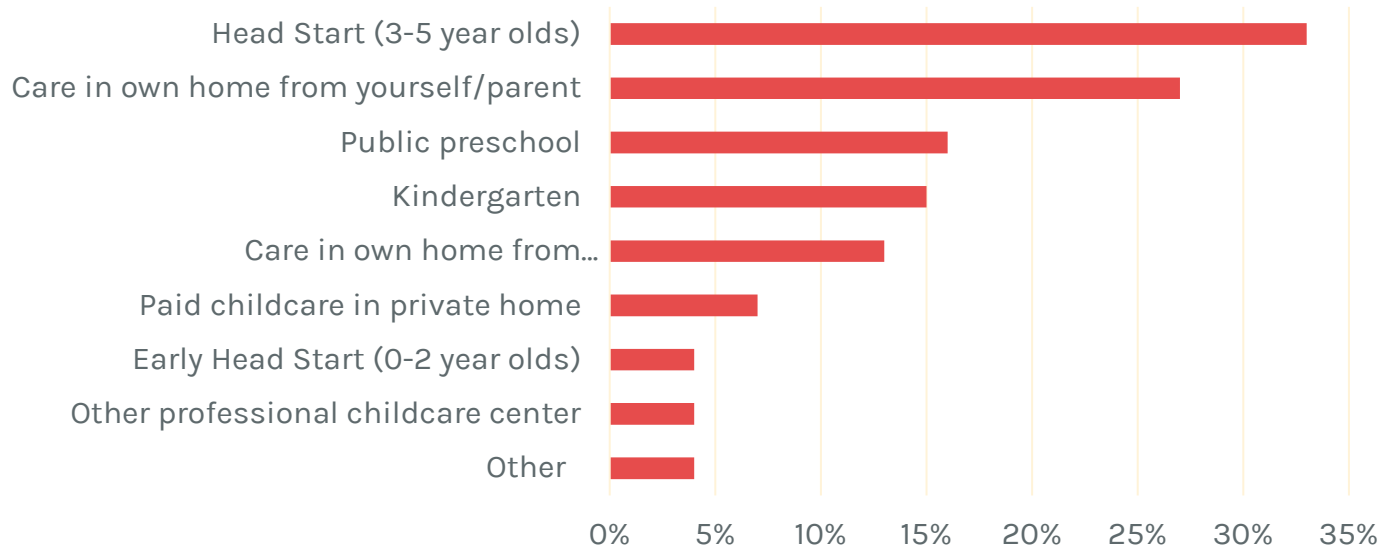
## HIGHEST LEVEL OF EDUCATIONAL ATTAINMENT

(age >25)  
ET-HH Residents Survey, 2020 ACS 5-Year Survey

# There are several places of learning for ET-HH children nearby, but some require an extended walk



# Early education/childcare arrangements (ages 0-5)



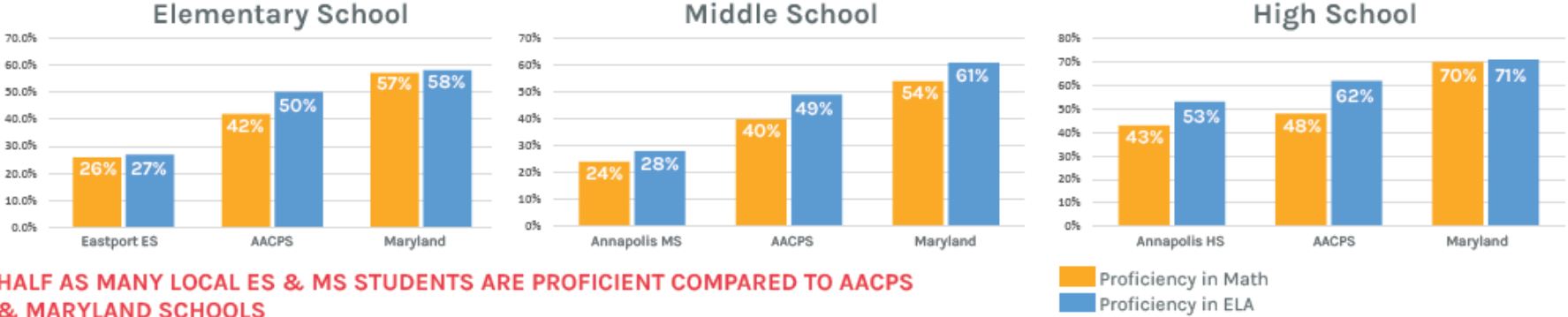
**68%** of ET-HH households report that a Childcare Center is **VERY NEEDED** in the Eastport neighborhood

Data Source: ET-HH Resident Survey

# Public schools that serve the neighborhood perform lower than public schools in Anne Arundel County and the State overall – especially at the Elementary and Middle School level

## SCHOOL PERFORMANCE

Maryland State Department of Education 2018-2019 School Report Cards



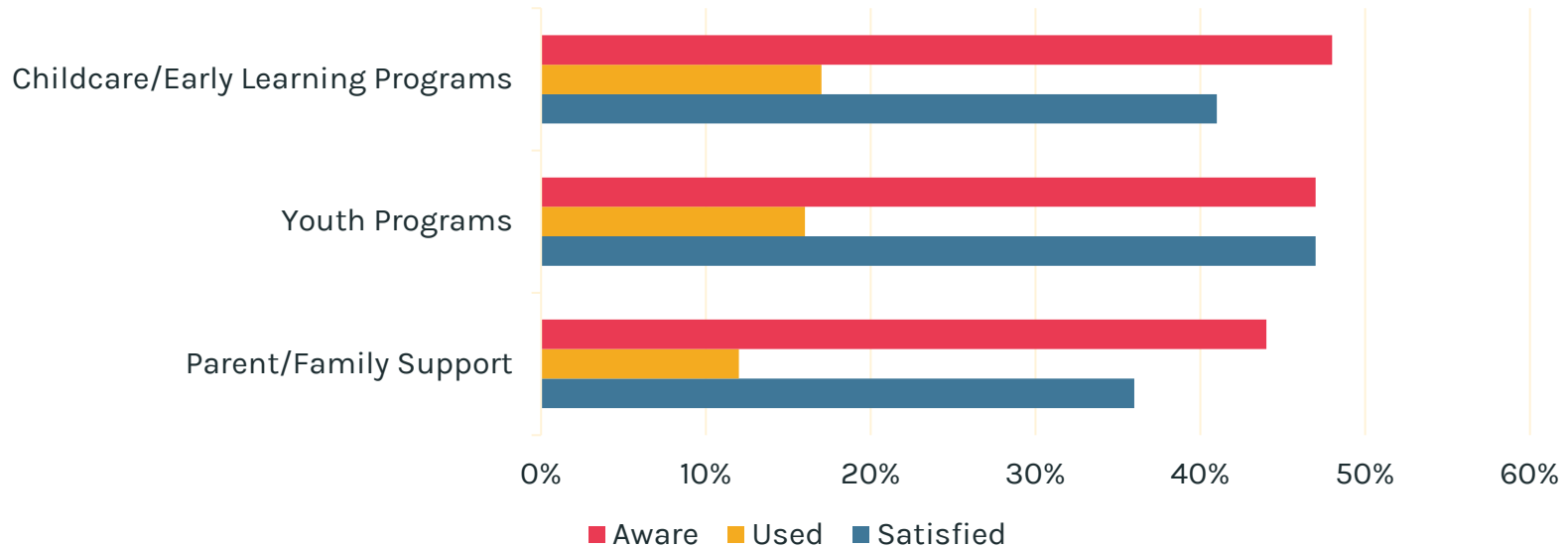
HALF AS MANY LOCAL ES & MS STUDENTS ARE PROFICIENT COMPARED TO AACPS & MARYLAND SCHOOLS

**66%** of children at ET-HH are of Elementary and Middle School age

HACA Yardi Demographic Data as of 6/1/2022

# Service utilization by ET-HH Households

Awareness, Utilization, + Satisfaction



**16%** of ET-HH Households with children report that at least one of their children have a diagnosed special need, such as an academic/learning disability or behavioral issues.

Data Source: ET-HH Resident Survey

# Children would participate in more sports/recreation and out-of-school programming

## Top 5 YOUTH PROGRAMS

### Would Your children Participate In

*Preliminary Findings of ET-HH Residential Survey*

1. **SPORTS AND RECREATION** (58.8%)
2. **AFTER SCHOOL PROGRAM** (57.7%)
3. **SUMMER CAMP** and/or Programs (47.1%)
4. **ARTS/** Performing Arts / **MUSIC** Programs (44.7%)
5. **MENTORING** (34.1%)





# DISCUSSION



# Discussion – Education

- **Which partners are currently providing these services? Are residents using these services?**
- **Which additional partners should we target?**
- **What specific strategies do you recommend? Why?**
- **Who has funding and resources that could be made available now? Longer term?**
- **Who needs space on site?**



**Choice** *Eastport*

PEOPLE | HOUSING | NEIGHBORHOODS